

## CHALLENGE PRIZES

- 1st Place **\$300**
- 2nd Place **\$200**
- 3rd Place **\$100**

## CHALLENGE RULES

- ◆ Challenge open to **ALL** quilt makers.
- ◆ All quilts will be juried; then judged by Nationally Certified Quilt Judges.
- ◆ Quilts must have been made in the last 12 months and must not have been exhibited at any other public quilt show.
- ◆ Each person/group may enter **one** quilt.
- ◆ All persons who stitched on the quilt, including the quilter, must be listed on entry form.
- ◆ All quilts must be made from fabrics and represent the 100 Years of Art Deco theme (geometric forms, bold outlines, zigzag forms, etc.).
- ◆ Quilts may be pieced, appliquéd, mixed or other.
- ◆ All quilts must be quilted through 3 layers by hand or machine or both. Quilts in multiple pieces or in frames are not accepted.
- ◆ Quilts must be 30" wide and 40" in length and must hang portrait style (vertically).
- ◆ Quilts must have a **4"** deep rod pocket.
- ◆ Quilts must be clean and in show condition.
- ◆ Quilts must be available from Aug. 16, 2021 - Sept. 30, 2023.
- ◆ Each entry must include **two** 4"x 6" high-quality color photos printed on photo paper: one full view of the quilt hanging, showing all quilt edges and one close-up showing quilting/stitching details. Paperclip photos to entry form. Images will not be returned.
- ◆ Each entry requires a self-addressed stamped #10 size envelope for notification from the jury. Notification letters will be sent July 31.
- ◆ Each entry requires an entry form and non-refundable \$10 entry fee. Make checks payable to **The Great Wisconsin Quilt Show**. Cash not accepted.
- ◆ Entry form and photos must be postmarked by **June 30, 2021**.

## CHALLENGE RULES cont'd.

- ◆ Quilts and/or persons who made them may be photographed and/or videotaped for promotional purposes.
- ◆ All decisions by the jury and judges are final. The jury reserves the right to reject any entry.
- ◆ Quilts selected by the jury will be displayed at The Great Wisconsin Quilt Show September 9-11, 2021 and must be available to travel for display at other quilt shows.
- ◆ Please mark your calendar: quilts will be returned by September 30, 2023.

## FOR ADDITIONAL INFORMATION CONTACT:

**Dana Casey** 920.356.9506 phone  
Marketing Coordinator 920.356.9509 fax  
Nancy Ziemann Productions quiltshow@zieman  
PO Box 531 productions.com  
Beaver Dam, WI 53916 quiltshow.com

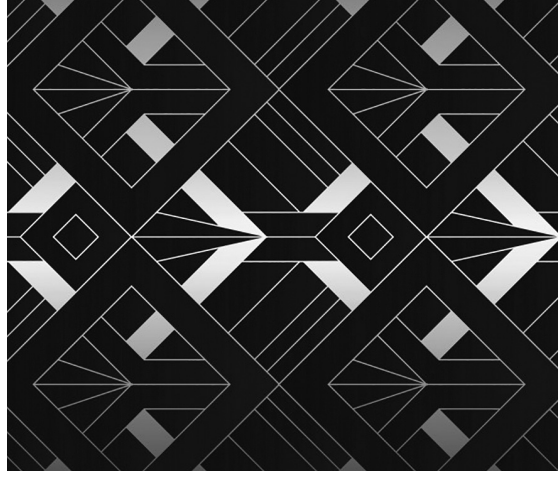
**Visit QuiltShow.com to print additional entry forms, and to learn more about the The Great Wisconsin Quilt Show Quilt Contest and the Kids' Quilt Contest for kids 15 and under.**

---

**The Great Wisconsin Quilt Show  
is presented by PBS Wisconsin and  
Nancy Ziemann Productions**



## 100 YEARS OF ART DECO QUILT CHALLENGE



**\$600 in Prizes**

Open to all quilt makers,  
amateur and professional.

**September 9-11, 2021**

(continued)

